



Republic of the Philippines
Department of Health
HEALTH FACILITY DEVELOPMENT BUREAU

01 December 2017

MEMORANDUM

FOR: **THE SECRETARY OF HEALTH ARMM AND
ALL DIRECTORS IV, DOH REGIONAL OFFICES**

FROM: **AR. MARIA REBECCA M. PEÑAFIEL, CESO IV
DIRECTOR III**

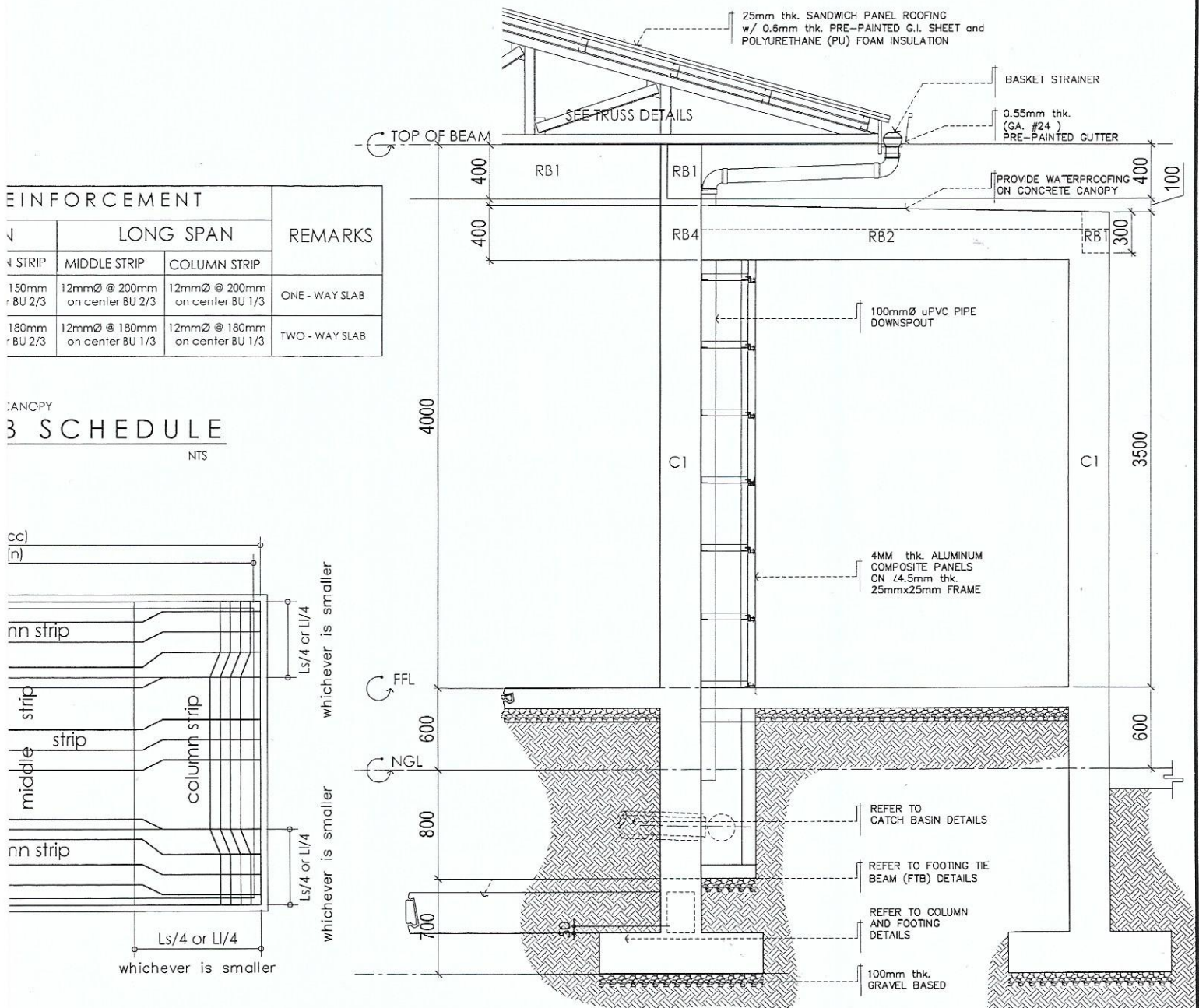
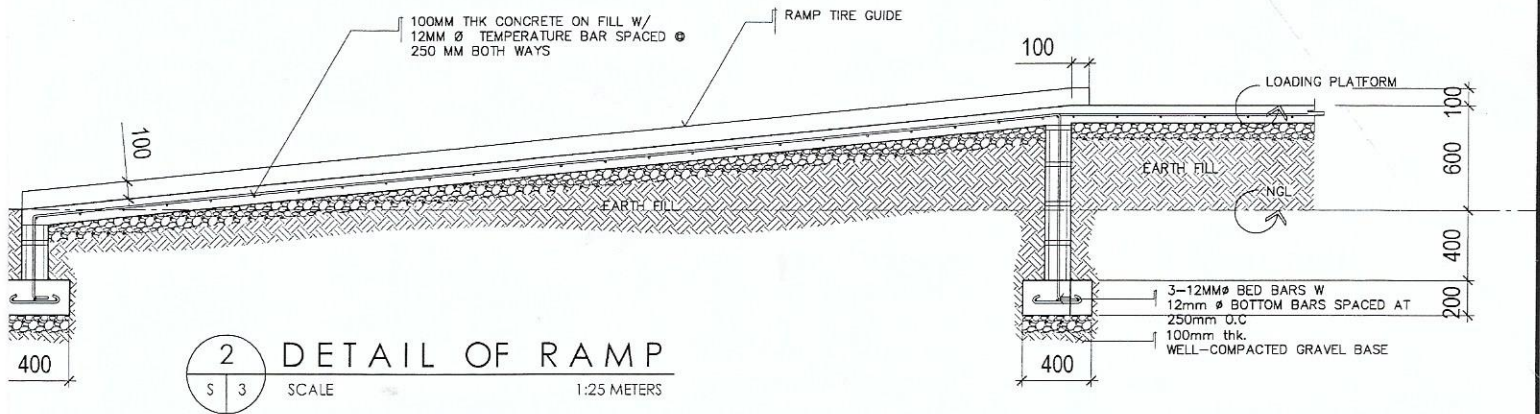
SUBJECT: **Revised Structural Plan for the Construction of Provincial Medicine Warehouse**



This is in view of the design modification for the Provincial Medicine Warehouse project.

We are respectfully forwarding the revised structural plan, specifically the change in the dimension of beam and number of reinforcing bars for beams RB3, RB4, RB5, RB6 and RB7 for your information. The corresponding Variation Order documentation will be undertaken by this office. Funds for the Variation Order will be charged against the projects savings.

Thank you very much.



AL SLAB DETAILS

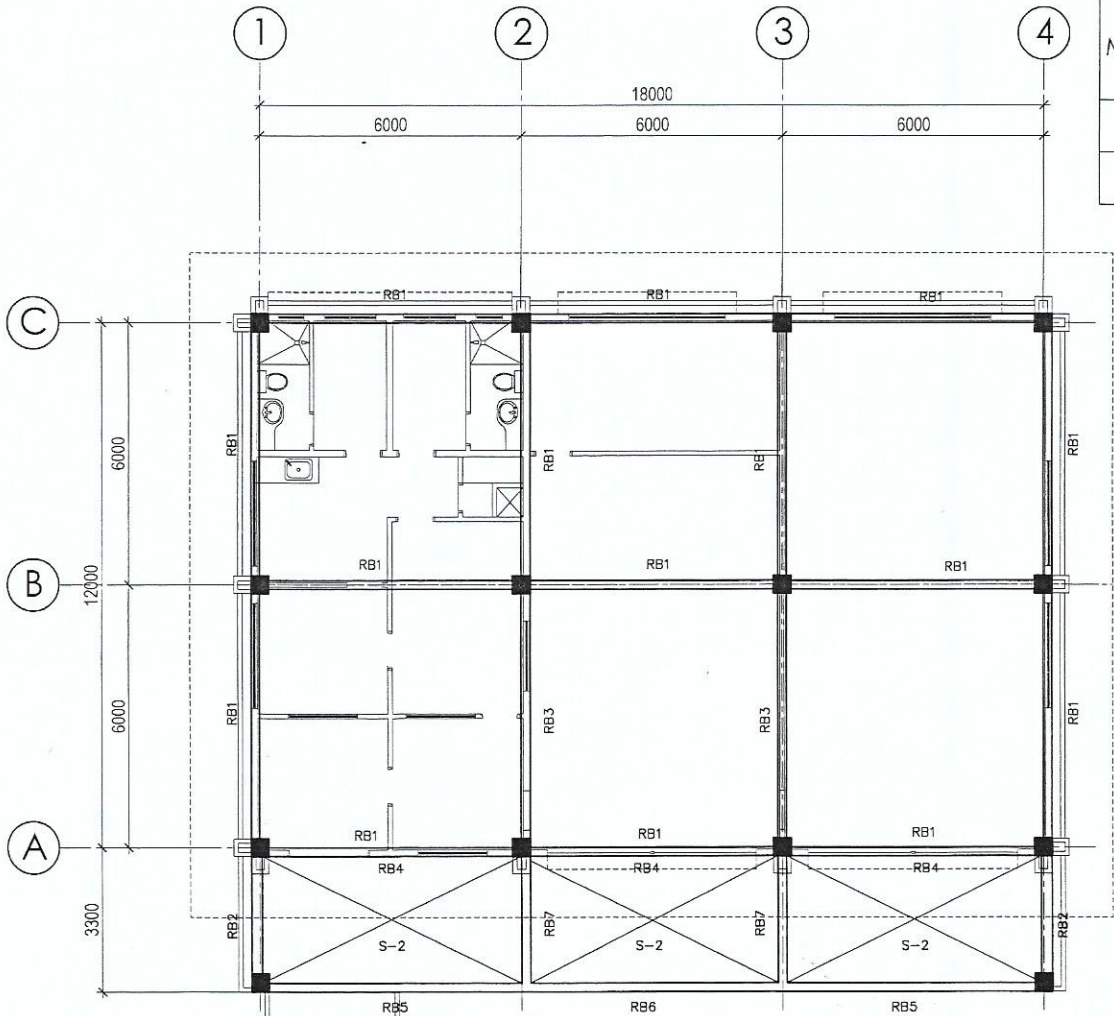
NTS

TS	CHECKED	CHECKED	CONCURRED	APPROVED	SHEET NO.
AILS AP IG PLAN AILS TAILS		MAXIMO A. ADAN JR., MCM ENGINEER V		ARCH. MA. REBECCA M. PEÑAFEL, CESO IV DIRECTOR III HEALTH FACILITY DEVELOPMENT BUREAU	S 3 4 drawn by: JRB revised date: 01.28.16
	PRC Reg. No. : IAPDA No. : PTR No. : Place : Validity : Date : TIN :	PRC Reg. No. : PICE No. : PTR No. : Place : Validity : Date : TIN :			

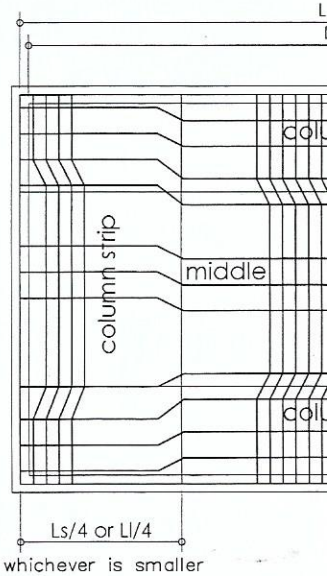
BEAM SCHEDULE											
MARK	SECTION		MAIN BARS							STIRRUPS	
			BAR DIA.	LEFT END		MIDDLE		RIGHT END			
	H	B		TOP	BOTTOM	TOP	BOTTOM	TOP	BOTTOM	SIZE	SPACING
FTB	300	200	Ø16	2	2	2	2	2	2	Ø12	1@50mm, 8@100mm, REST @200mm O.C.
RB1	300	200	Ø16	2	2	2	2	2	2	Ø12	1@50mm, 8@100mm, REST @200mm O.C.
RB2	350	250	Ø16	4	4	4	4	4	4	Ø12	1@50mm, 8@100mm, REST @200mm O.C.
RB3	350	250	Ø16	4	3	4	3	4	3	Ø12	1@50mm, 8@100mm, REST @200mm O.C.
RB4	400	300	Ø16	3	2	3	2	3	2	Ø12	1@50mm, 8@100mm, REST @200mm O.C.
RB5	400	300	Ø16	5	3	5	3	5	3	Ø12	1@50mm, 8@100mm, REST @200mm O.C.
RB6	400	300	Ø16	3	3	3	3	3	3	Ø12	1@50mm, 8@100mm, REST @200mm O.C.
RB7	450	350	Ø16	6	3	-	-	-	-	Ø12	1@50mm, 8@100mm, REST @200mm O.C.

1 TYPICAL BEAM DETAILS
SCALE 1:20 METERS

MARK	t (mm)	STEEL R	
		SHORT SPA	
		MIDDLE STRIP	COLUM
S - 1	125	12mmØ @ 150mm on center BU 2/3	12mmØ on cen
S - 2	125	12mmØ @ 180mm on center BU 2/3	12mmØ on cen



4 CONCRETE SLAB
SCALE



3 ROOF BEAM FRAMING PLAN
SCALE 1:100 METERS

5 TYPICAL
SCALE



Republic of the Philippines
DEPARTMENT OF HEALTH
**HEALTH FACILITY
DEVELOPMENT
BUREAU**
Bldg. 4, DOH Central Office,
Rizal Avenue, Sta. Cruz, Manila City

ARCHITECT OF RECORD

PRC Reg. No.	Validity
IAPDA No.	O.R. No. Date
PTR No.	Date
Place	TIN

RA 9266 SECTION 33
Drawings and specifications and other contract documents duly signed, stamped or sealed, as instruments of service, are the intellectual property and documents of the architect, whether the object for which they are made or executed or not. It shall be unlawful for any person to duplicate or make copies of said documents for use in the execution of and for other projects or buildings, whether executed partly or in whole, without the written consent of the architect or author of said documents.

CIVIL ENGINEER

SEVERINO B. REYES III, CE, SE
ENGINEER III

PRC Reg. No.	Validity
PTR No.	Date
Place	TIN

PROJECT

PROPOSED CONSTRUCTION
OF PROVINCIAL
MEDICINE WAREHOUSE

LOCATION

SHEET CONT

TYP. BEAM DE
DETAIL OF F
ROOF BEAM FRAM
TYP. SLAB DE
BAY SECTION